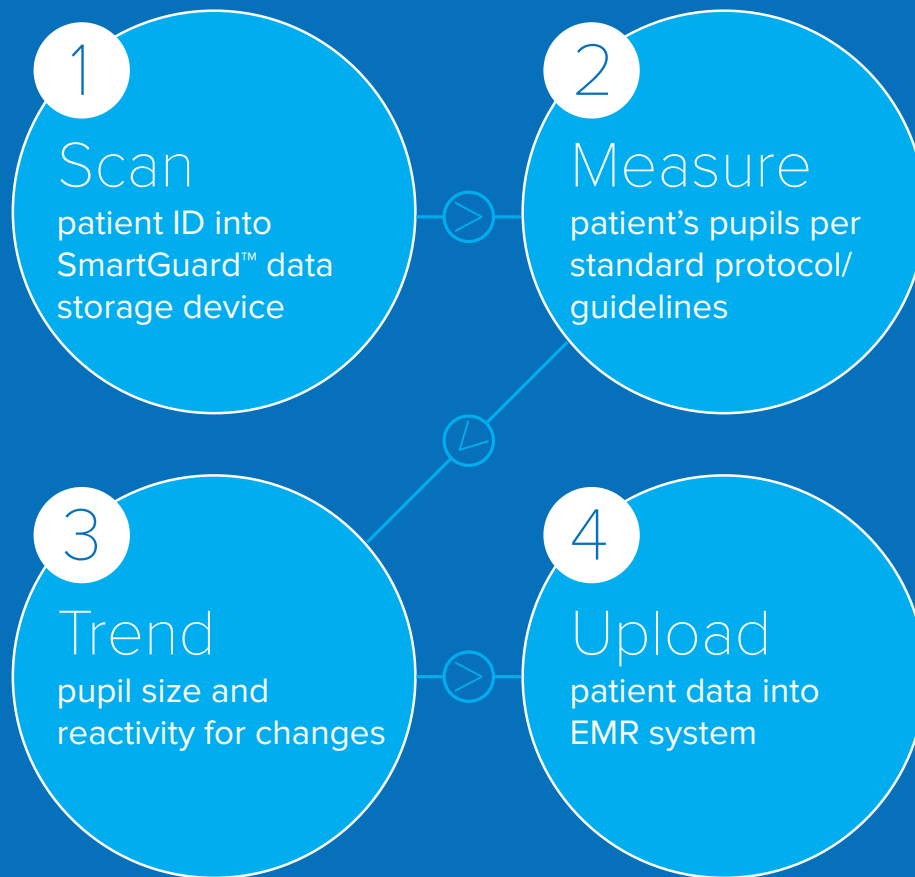




NEUR^{•••}PTICS

Introducing the NeurOptics® Smart Approach to Pupillary Evaluation

A completely automated system from patient admission to discharge



An accurate, reliable and objective system that **saves valuable nursing time** and eliminates potential charting errors

NPi[®]-200 Pupillometer System

NPi[®]-200 Pupillometer

- Completely accurate, reliable and objective pupil size and reactivity data *independent of examiner*
- Pupil reactivity expressed numerically so that now changes in both pupil size and reactivity can be trended over time, just like other vital signs
- Infrared camera, high-precision optics, processor and LED light source
- Bluetooth[®]-enabled, customizable trending screen, EMR-compatible
- Durable, ergonomic design
- Industry-best full two-year replacement warranty



SmartGuard[™]

- Single-patient-use device with smart-card technology
- All patient data stored on SmartGuard memory
- Facilitates patient data upload into EMR system
- Patient data can be destroyed in compliance with HIPAA guidelines and facility policies

NeuroOptics[®] Antimicrobial Barcode Scanner by Socket[®]

- Simple and fast patient ID scans into SmartGuard
- One-time patient ID entry at initial programming of SmartGuard (no need to scan before each pupil measurement)



SmartGuard[™] Reader by Omnikey[®]

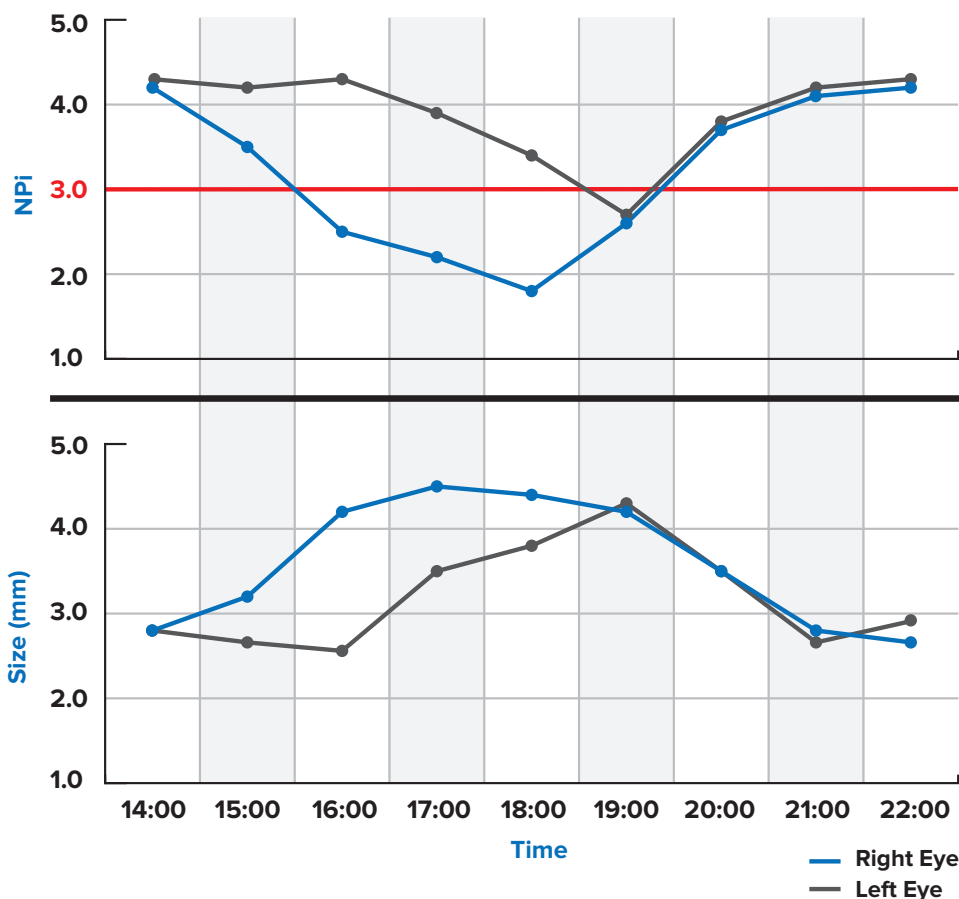
- Retrieves and automatically uploads patient data from SmartGuard
- Simple USB connection allows Reader to be deployed at any nursing terminal or station



Establish a Baseline and Trend for Changes

- Pupil reactivity expressed numerically
- Now changes in both pupil size and reactivity can be trended over time, like other vital signs
- Along with trending size and NPi®, the NPi®-200 can be customized to trend all parameters of the pupillary light reflex waveform, depending on clinician preference

Pupil Size and Reactivity Variability Over Time



The Neurological Pupil index™ (NPi®) Pupil Reactivity Assessment Scale

Measured Value*	Assessment
3.0 – 4.9	Normal/“Brisk”
<3.0	Abnormal/“Sluggish”
0	Non-Reactive or Atypical Response

**A difference in NPi between right and left pupils of ≥ 0.7 can also be considered an abnormal pupil reading*

**Per the Neurological Pupil index (NPi) algorithm*

Ordering Information

NPi-200	NPi®-200 Pupillometer
SG-200	SmartGuard™
BCS-CC-01	NeuroOptics® Antimicrobial Barcode Scanner by Socket®
SGR-01	SmartGuard™ Reader by Omnikey®



©NeuroOptics, Inc. 2014. NeuroOptics, NPi, Neurological Pupil index, SmartGuard, and SmartGuard Reader are all trademarks of NeuroOptics, Inc. Bluetooth is a registered trademark of Bluetooth SIG, Inc., Socket is a registered trademark of Socket Mobile, Inc., and Omnikey is a registered trademark of HID Global Corporation/ASSA ABLOY AB. All rights reserved.

2082 Michelson Drive, Suite 450
Irvine, CA 92612 | U.S.A.
p: 949.250.9792
Toll-Free North America: 866.99.PUPIL
NeuroOptics.com